

Morse Foundation Genius Reserve Progress Report



W. P. 3—Genius Drive, Winter Park, Fla.

Prepared by Dr. R. Bruce Stephenson &
Forest Michael, Michael Design Associates



This project will be the first step in a long-term planning process to make the site a cultural reserve of Old Florida, a mix of Nature with a sustainable human presence-- a place providing a glimpse of an earlier generations aesthetic ideal, while providing a “working laboratory” in landscape restoration.



A glimpse of an earlier generations aesthetic ideal

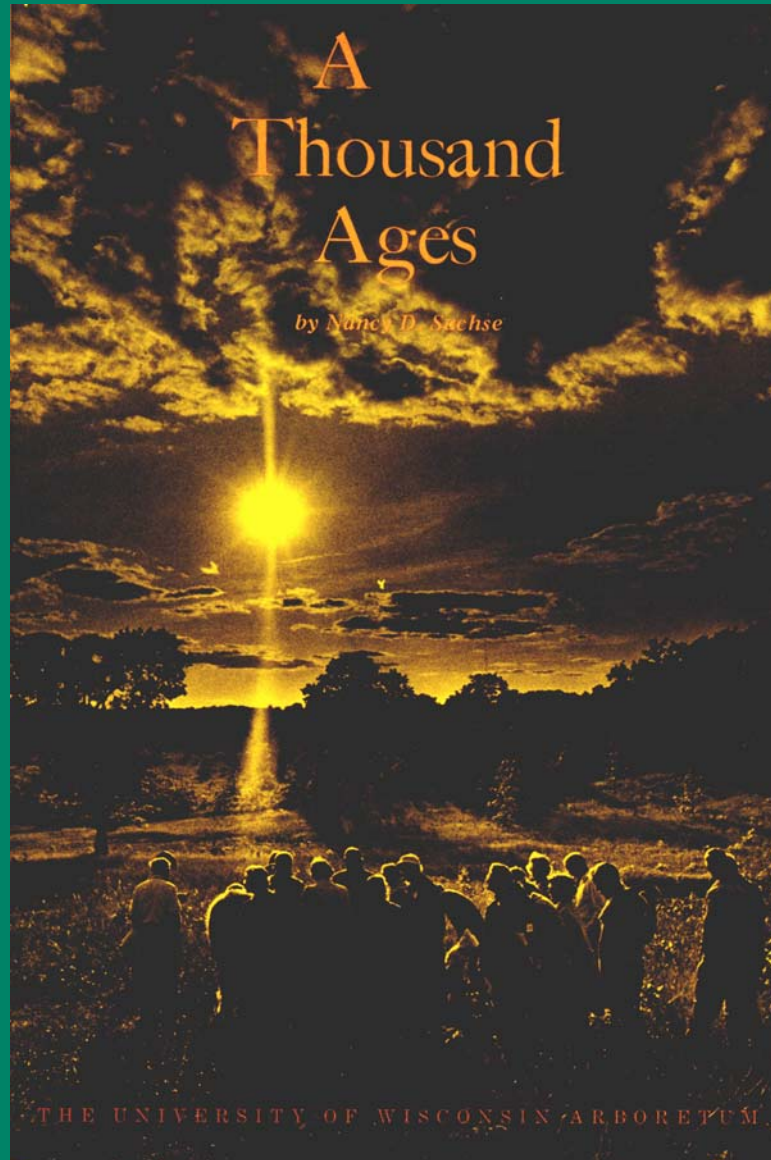


Model Working Laboratory



University of
Wisconsin
Arboretum

University of Wisconsin Arboretum





UW
Arboretum



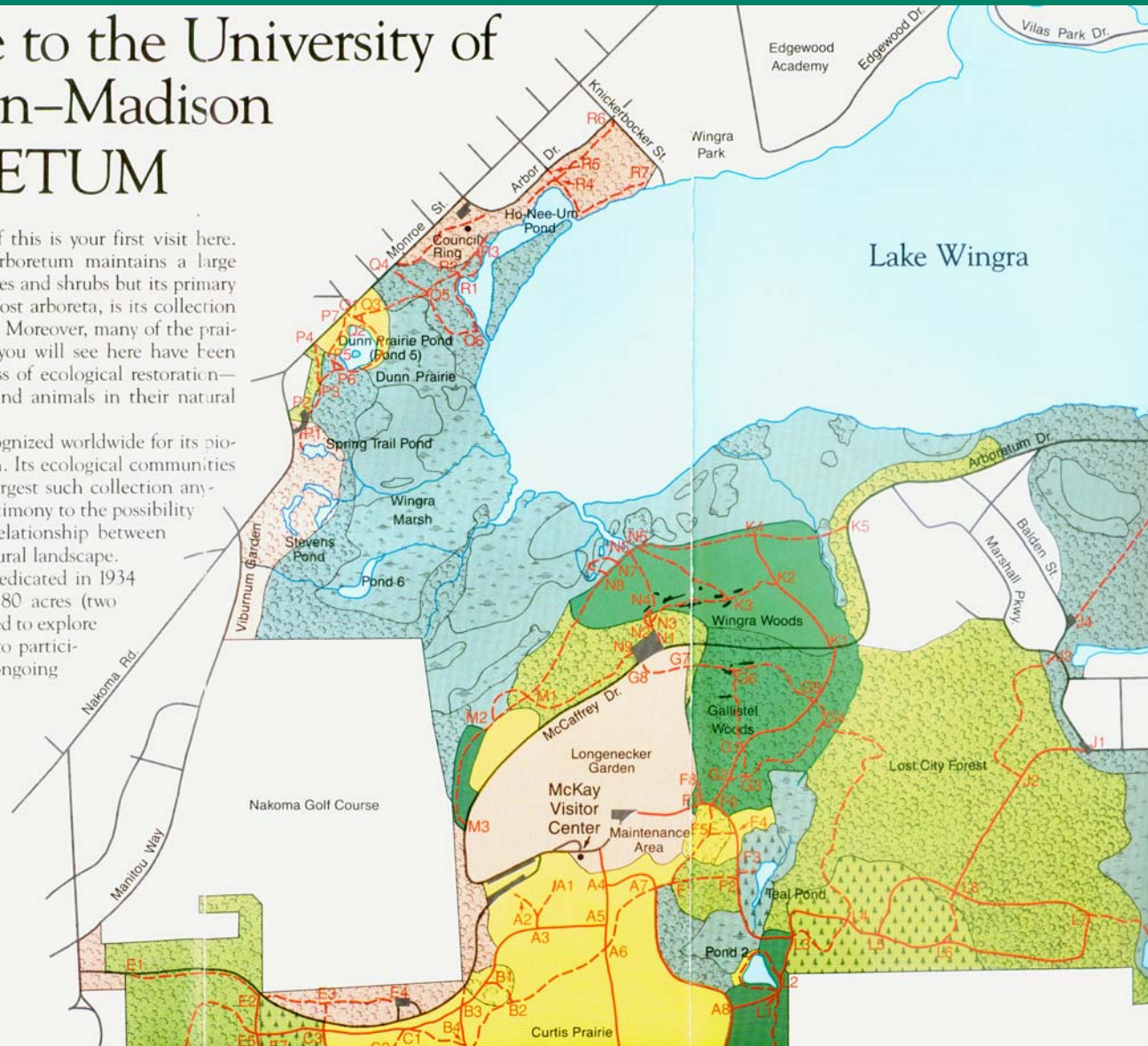
University of Wisconsin Arboretum

Welcome to the University of Wisconsin–Madison ARBORETUM

Expect a few surprises if this is your first visit here. The UW–Madison Arboretum maintains a large collection of individual trees and shrubs but its primary emphasis, in contrast to most arboreta, is its collection of ecological communities. Moreover, many of the prairies, forests and wetlands you will see here have been created through the process of ecological restoration—the reassembly of plants and animals in their natural groupings.

The Arboretum is recognized worldwide for its pioneering work in restoration. Its ecological communities represent the oldest and largest such collection anywhere and are dramatic testimony to the possibility of a mutually beneficial relationship between human beings and the natural landscape.

The Arboretum was dedicated in 1934 and today encompasses 1280 acres (two square miles). You are invited to explore its 20 miles of trails, and to participate as a volunteer in its ongoing efforts to heal the land.



Environmental Analysis

FNAI – Dr. William Grey



Initial Inventory: categories



Ecological
Restoration

Garden

Grove

Park

Ward House

Paths

Buffers

Drive



Restoration



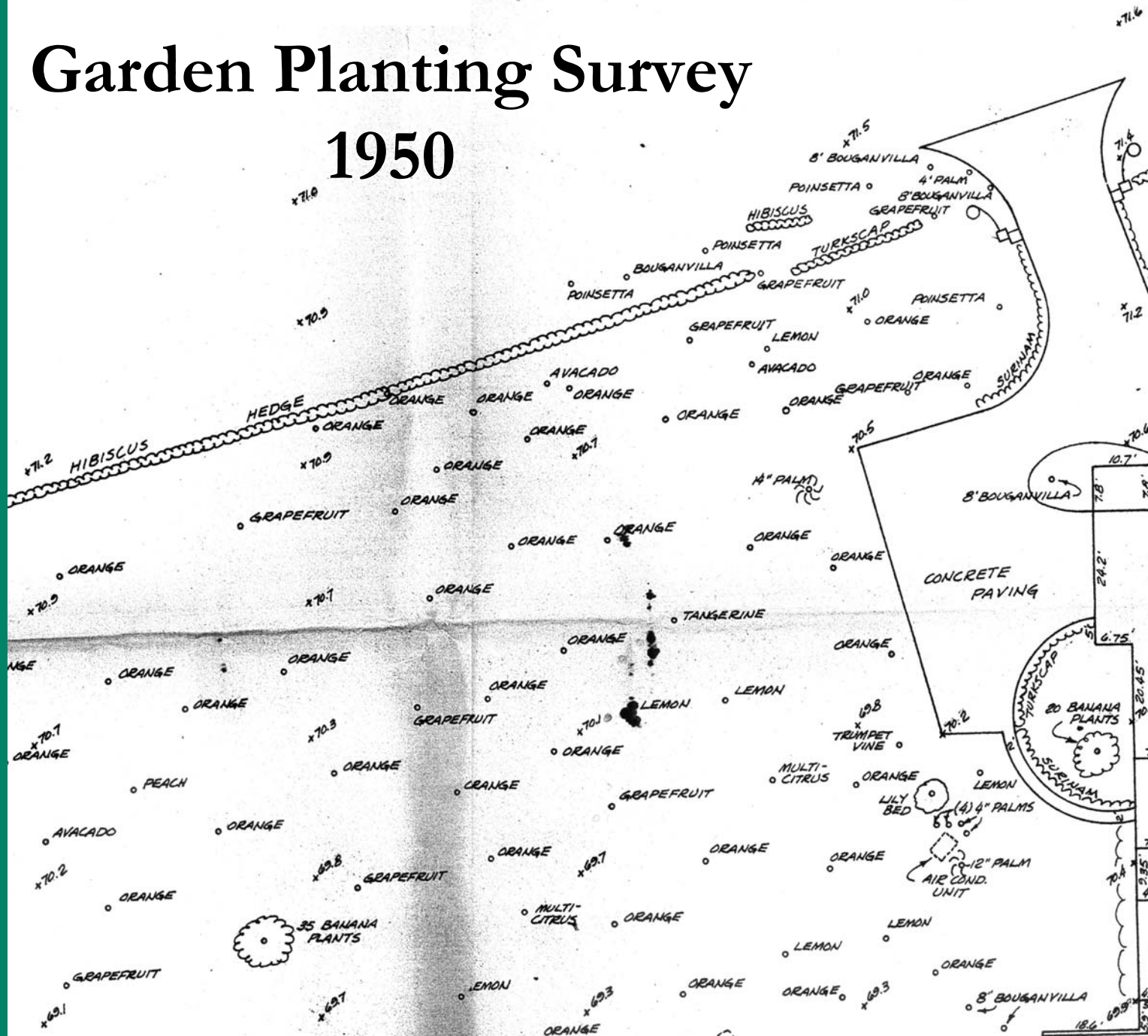
Progress



Garden

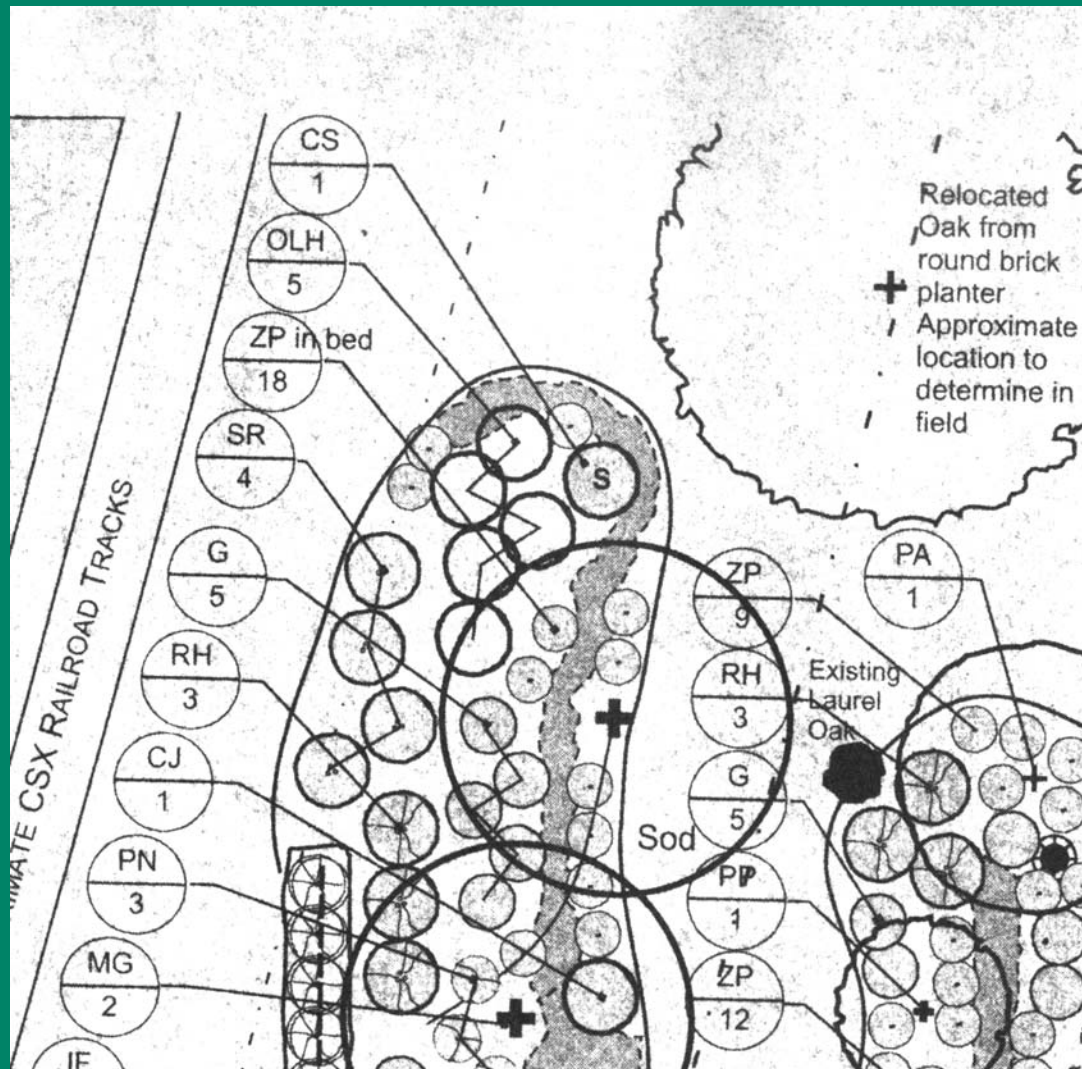
Garden Planting Survey

1950



Genius Drive Planting Plan - Spring

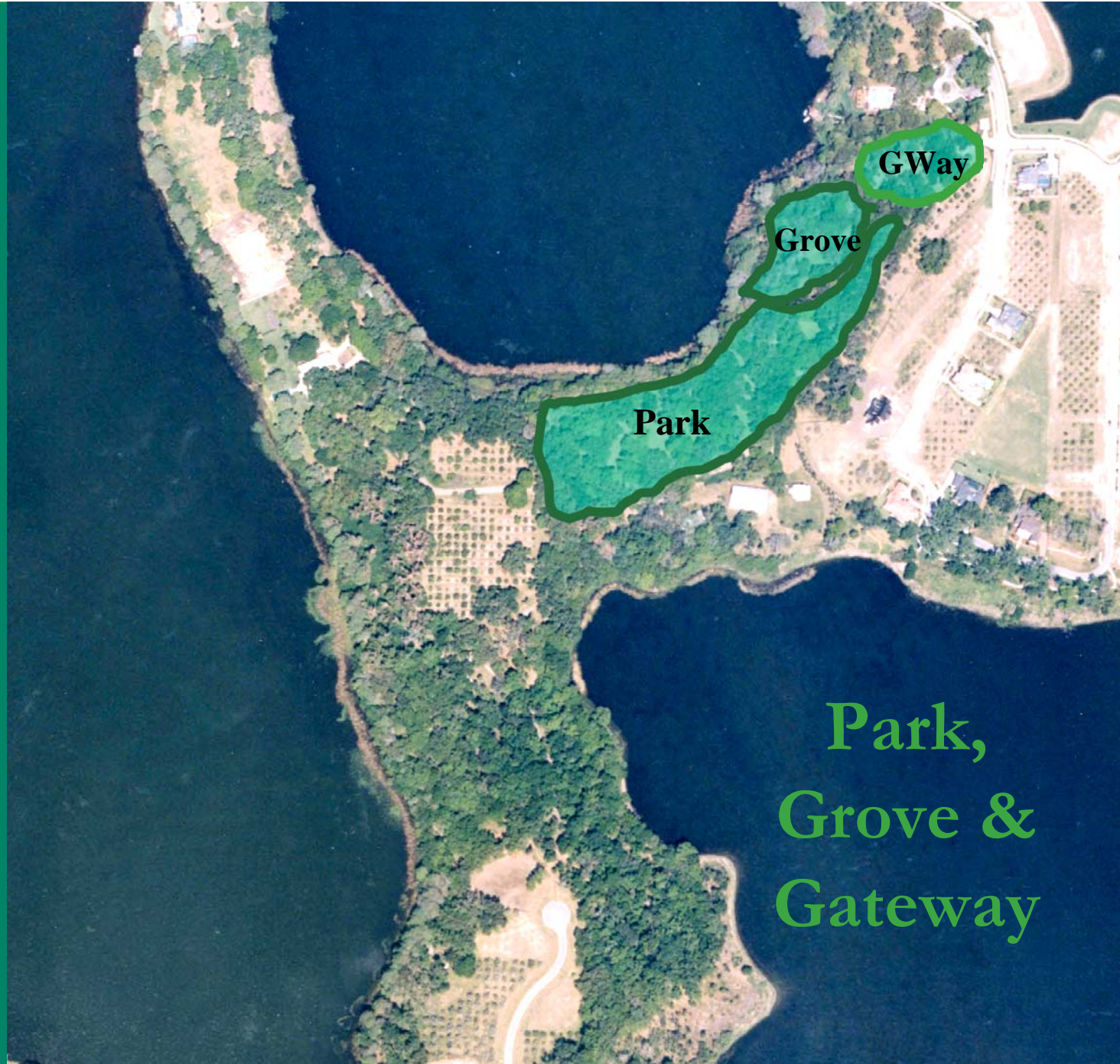
Sample



Initial Inventory: categories

Park





GWay

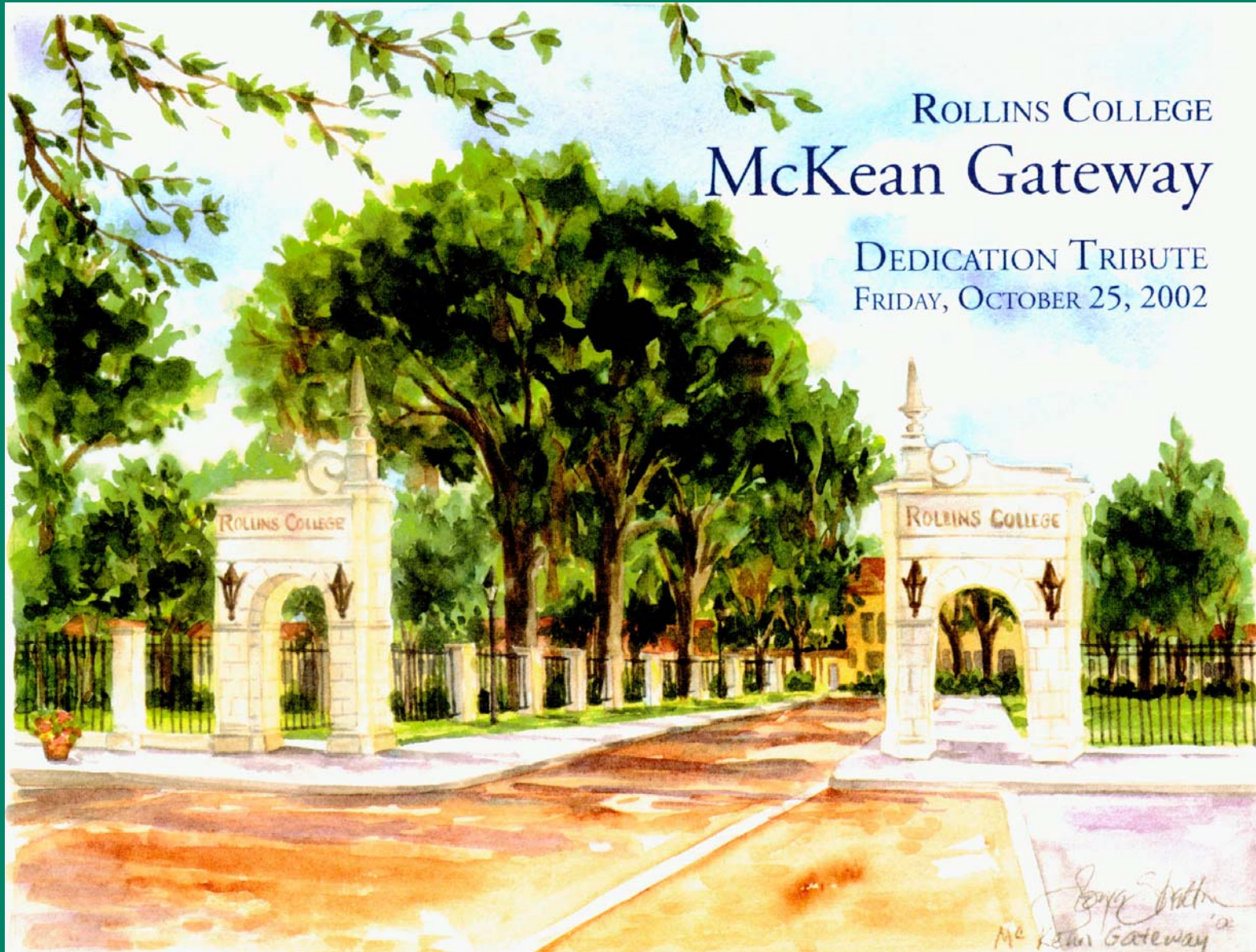
Grove

Park

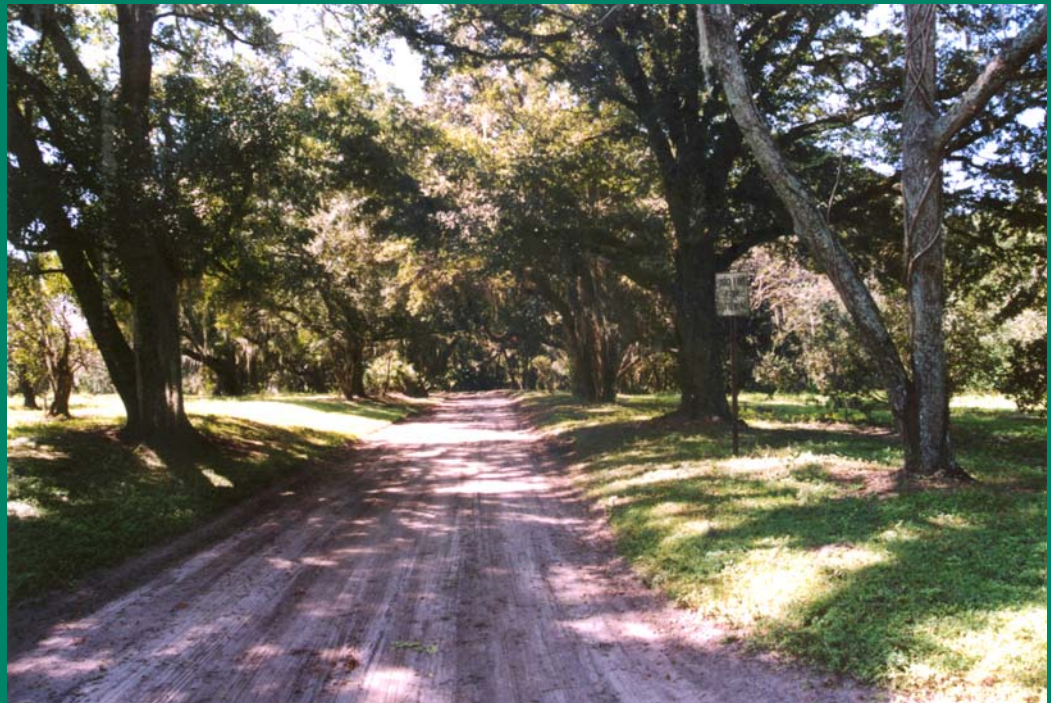
Park,
Grove &
Gateway

ROLLINS COLLEGE
McKean Gateway

DEDICATION TRIBUTE
FRIDAY, OCTOBER 25, 2002



Ward Gateway



Gateway and Grove



Gateway and Grove



Central Park



Chapman House

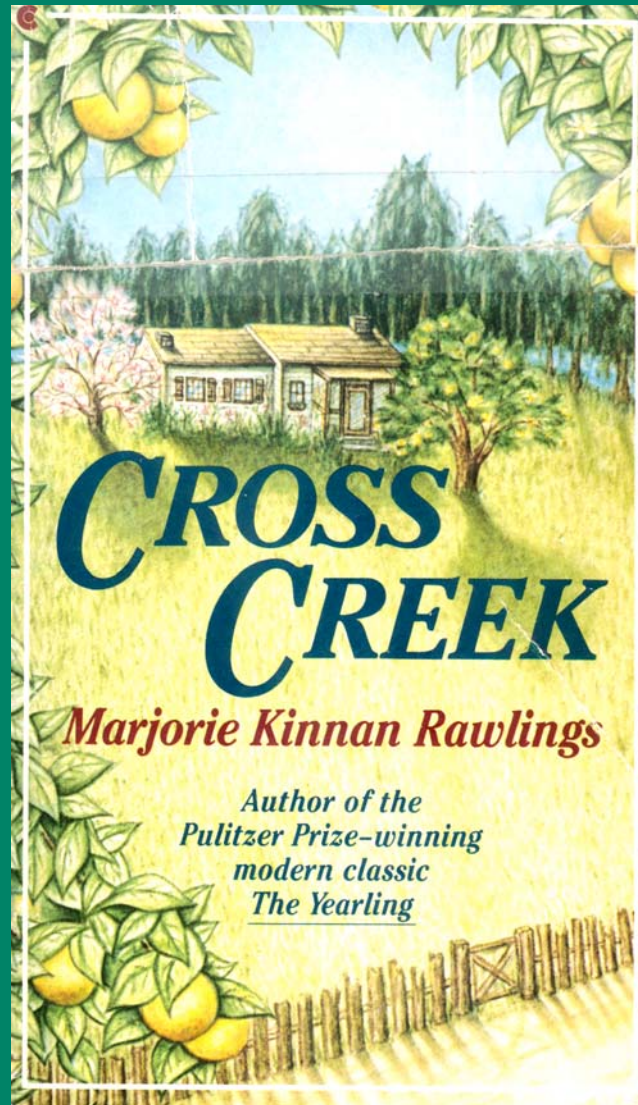
Park and Grove





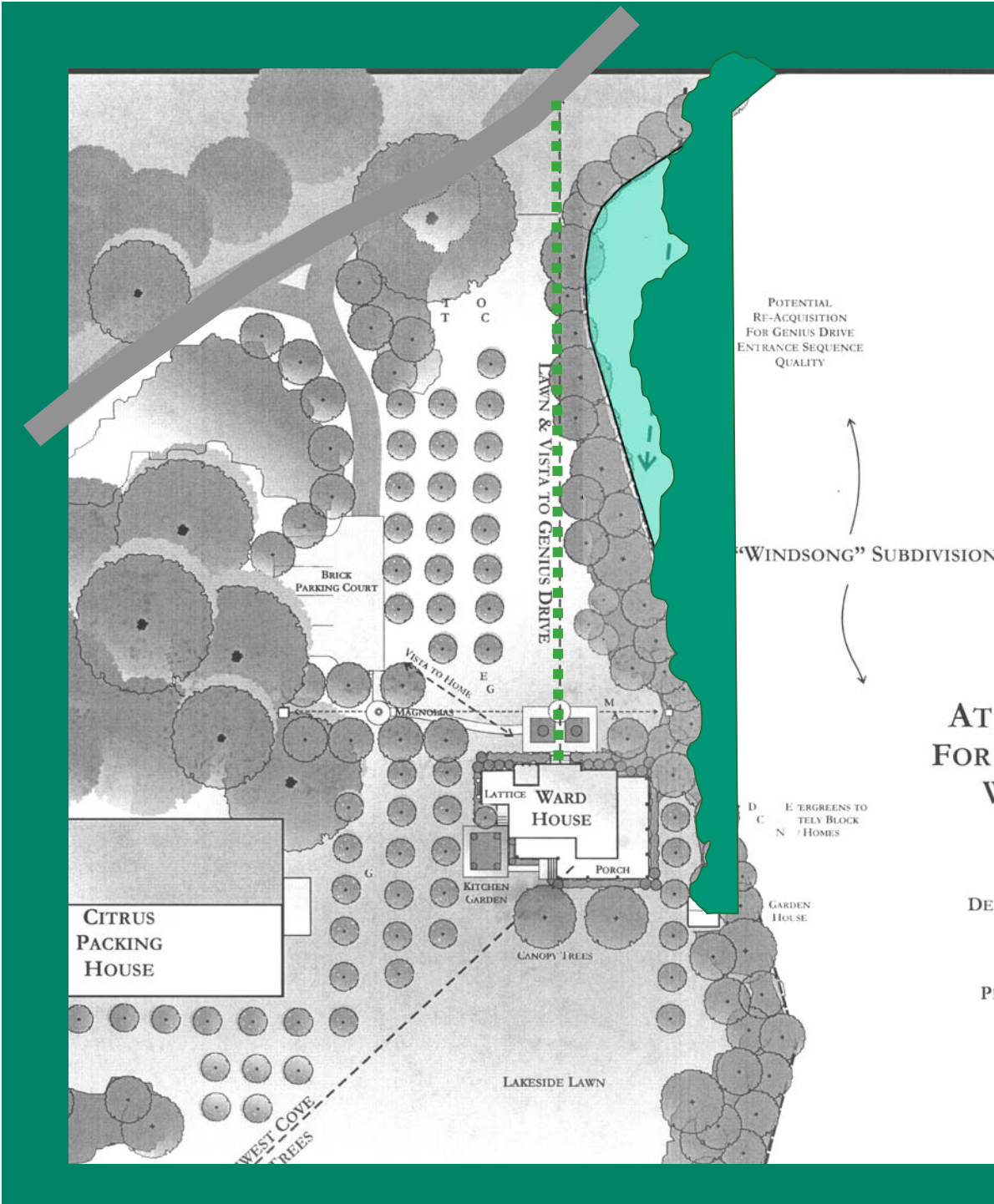
Ward House

A cultural reserve of Old Florida, a mix of Nature with a sustainable human presence-- a place providing a glimpse of an earlier generations aesthetic ideal, while providing a “working laboratory” in landscape restoration.



Home in a grove

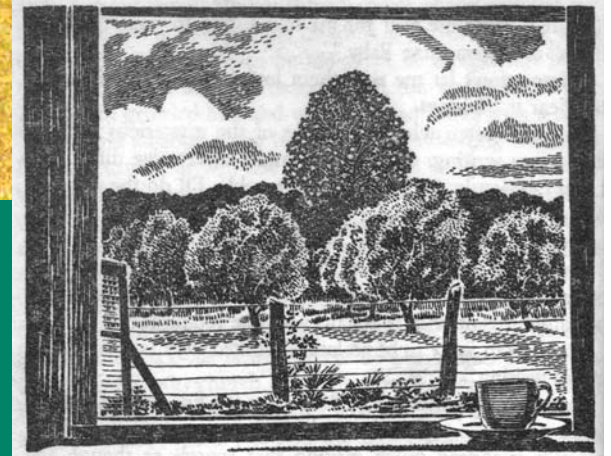




Ward House



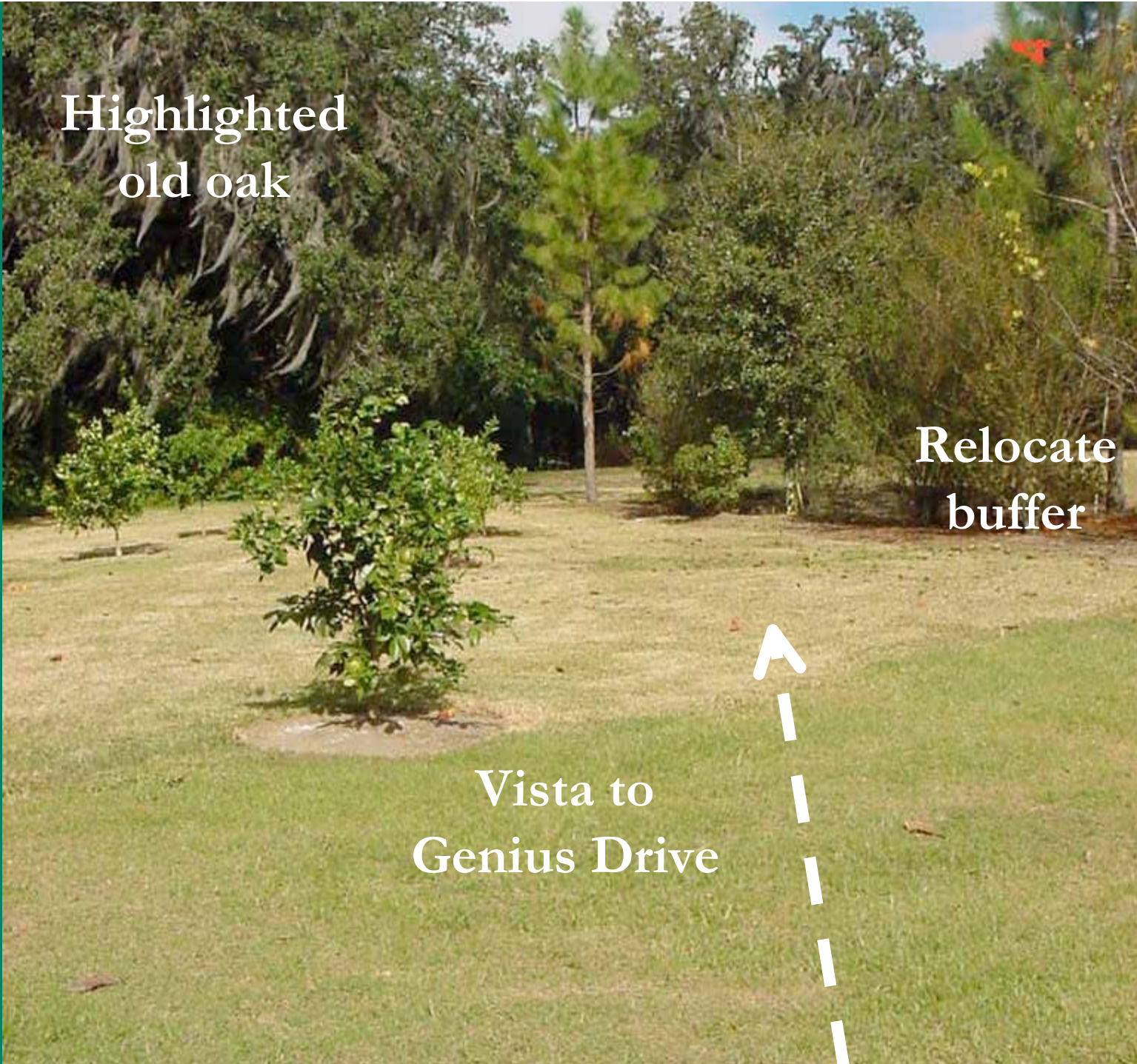
Future vista to front door
from Genius Drive



Highlighted
old oak

Relocate
buffer

Vista to
Genius Drive



Ward House – Original vista



Highlight
old oak

increase
buffer

Vista to
Genius Drive



Before



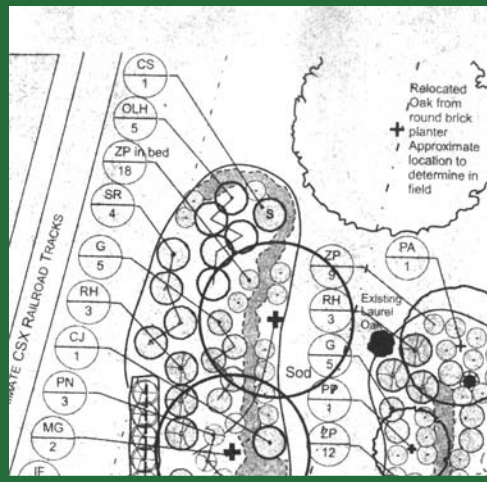
After/ *underway*



Lake Mizell

4 11:57 AM

Next step - planting plans and work for property lines



Spring 2003

FNAI - Florida Natural Areas Inventory
Cedar Grove Concept
Genius Drive Planting Concept (Segment)
Genius Reserve Concept Plan

Next Step

Genius Reserve
Master Management Plan

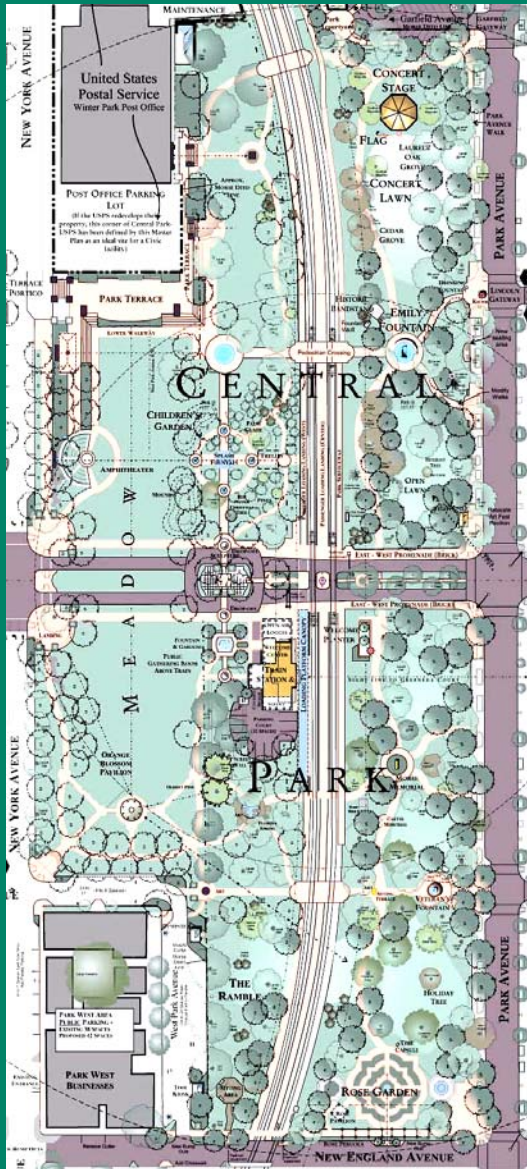
MASTER MANAGEMENT PLAN

Master Plan graphic with
Board approvals

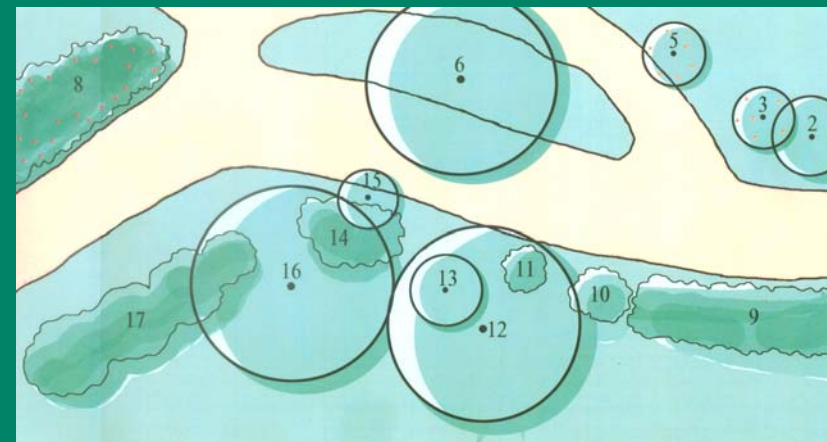
Written Recommendations
with line items defined

Cost per line item

Phasing of line items
(Immediate and long term)



Genius Reserve: a landscape of heritage



Morse Foundation Genius Reserve Progress Report



W. P. 3—Genius Drive, Winter Park, Fla.

Prepared by Dr. R. Bruce Stephenson &
Forest Michael, Michael Design Associates