



The Genius Reserve: Past, Present, and Future

Sara Shaw

Scott Bianconi

Marissa Williams

Rollins College Mission Statement

Rollins College educates students for *global citizenship and responsible leadership*, empowering graduates to pursue meaningful lives and productive careers. Our guiding principles are excellence, *innovation*, and *community*.

We provide opportunities to explore diverse intellectual, spiritual, and *aesthetic traditions*.

We are dedicated to scholarship, academic achievement, *social responsibility*, and *environmental stewardship*.

An aerial satellite view of a residential area. A large, dark lake is on the left side. In the center, there is a golf course with a grid of green fairways. To the right, there is a dense residential neighborhood with many houses and trees. A compass rose is visible in the top right corner.

An expression of the Liberal Arts Ideal

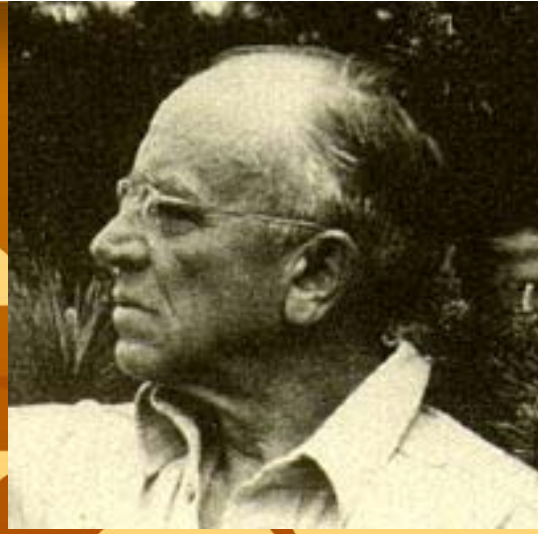
Liberalis –

“appropriate for free men”

Land Aesthetics and Ethics

- Agrarian and pastoral-
“Nature abhors straight lines”
- Leopold: must include both
evolutionary heritage and
ecological processes

- “Land organism” – Mumford
 - Optimal qualities vs.
proper function
- In-depth study of all aspects of an issue



Values for People and Environment

- **Mesic oak and orange grove: culture and heritage**
- **Historical**
- **Ecological**
- **Educational**
- **Theoretical and experiential learning**



Landscape Gardening



- Utility in beauty
- Unity
- Frame
- Balance
- Repetition



The Value of Genius

- “All wilderness areas, no matter how small or imperfect, have a large value to land-science. The important thing is to realize that recreation is not their only or even their principal utility. In fact, the boundary between recreation and science, like the boundaries between park and forest, animal and plant, tame and wild, exists only in the imperfections of the human mind.”

Aldo Leopold

Rollins Educational Consilience

- Environmental Literature (English)
- Wild Florida (Biology)
- Environmental Ethics (Philosophy)
- Medicinal Botany (Biology)
- Ecology (Biology/Env. Studies)
- Senior Seminar (Environmental Studies)



Edgewater High School Visit

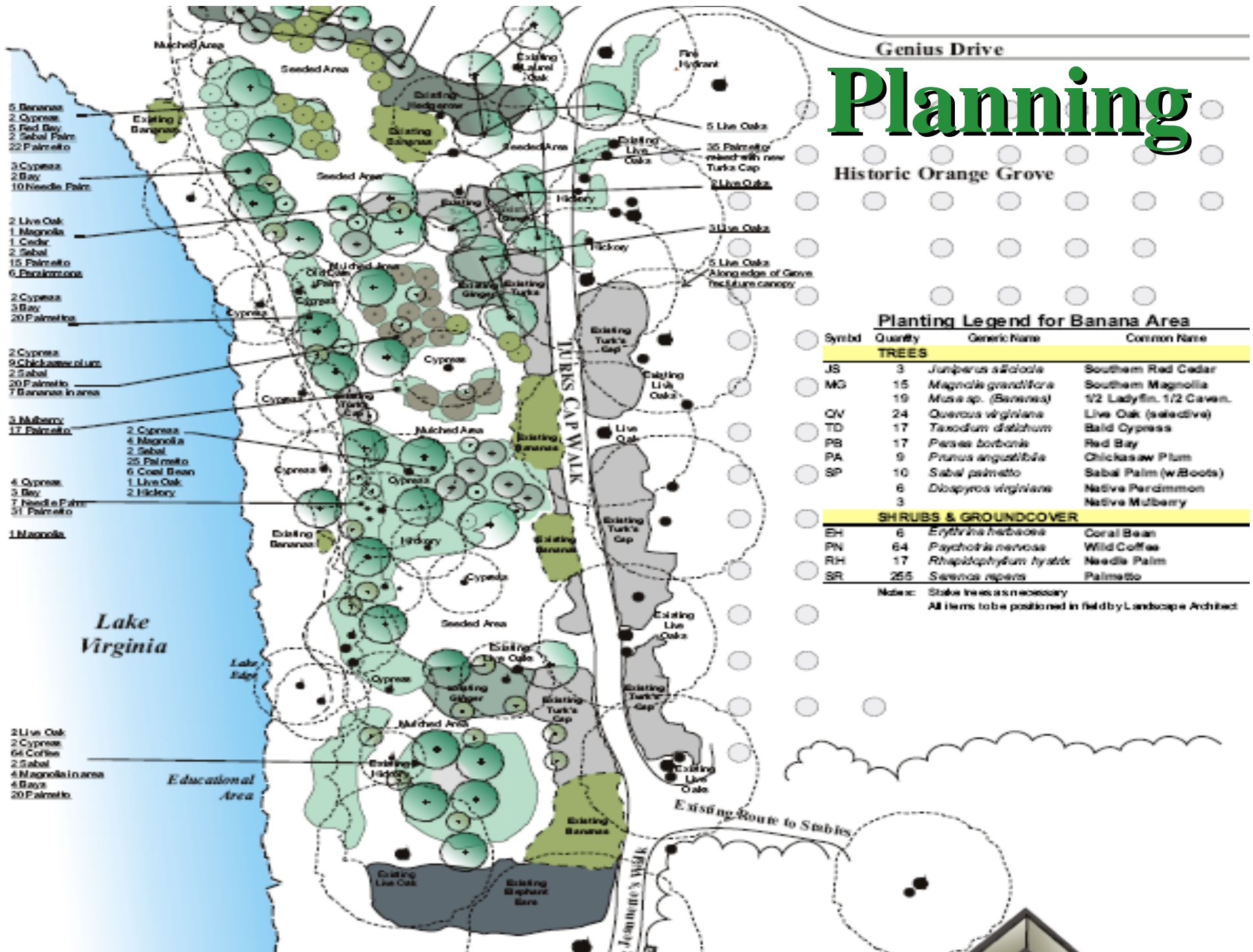


Past Landscape Restorations



The Banana Grove, Cedar Grove, and McKean House

Planning



Invasives



The Restoration Begins



- It is desirable, and possible, for man to intervene in nature in order to improve it

“Unless somebody weeds it, sedulously and knowledgeably, it will quickly be overrun with alien species. This time landscape is in perpetual danger of degenerating into an everyday vacant lot.”

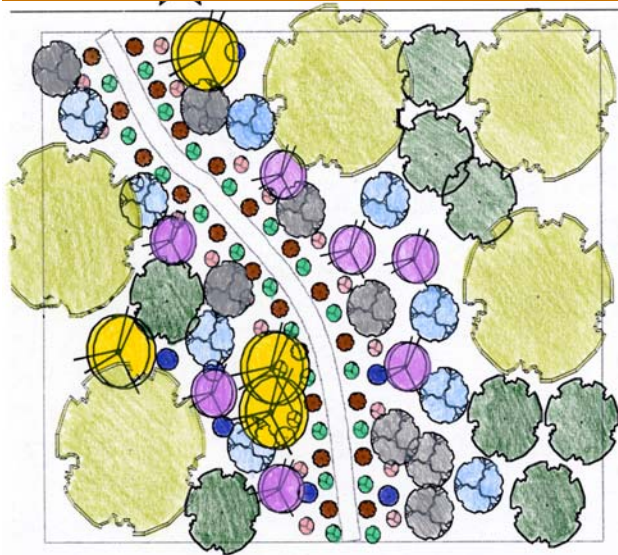
Michael Pollan



Species Found in Restoration Sites



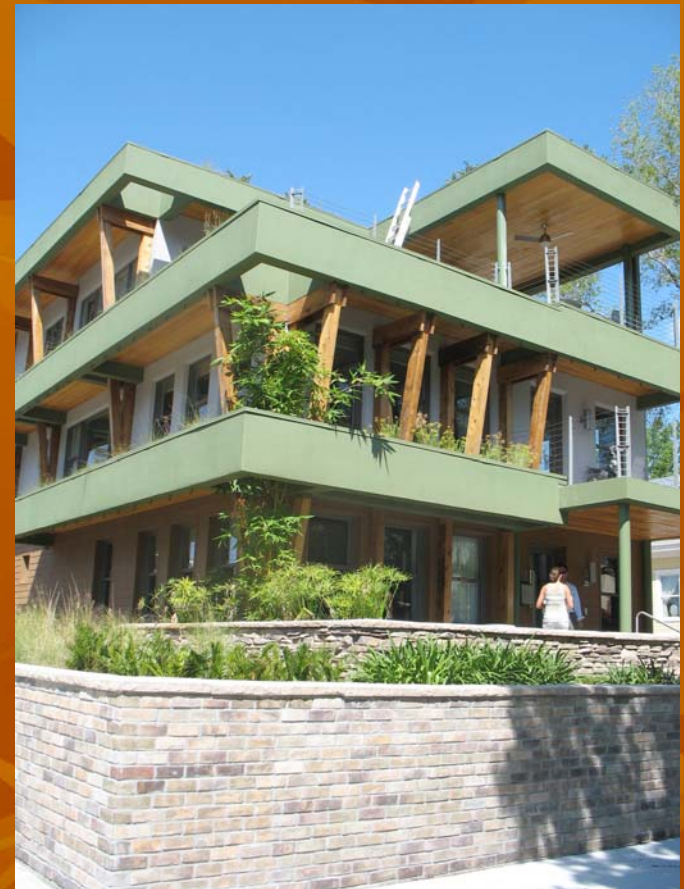
The McKean House Restoration



- Live Oak - *Quercus virginiana*
- Southern Magnolia - *Magnolia grandiflora*
- Pignut Hickory - *Carya glabra*
- Coffee - *Psychotria nervosa*
- Coontie - *Zamia floridana*
- Camellia - *Camellia japonica*
- American Beautyberry - *Callicarpa americana*
- Redbud - *Cercis canadensis*
- Plum - *Prunus angustifolia*
- Dogwood - *Cornus florida*



The Ward House: a Modern Juxtaposition



Ward House Design

- Connection between the plantation style of “Old Florida” with a variety of native ecologically beneficial plantings.
- The goal is to create an environmentally sound landscape while also providing esthetic utilitarian beauty

The Butterfly Garden

Milkweed



Plumbago

Butterfly Garden cont.

Spiderwort



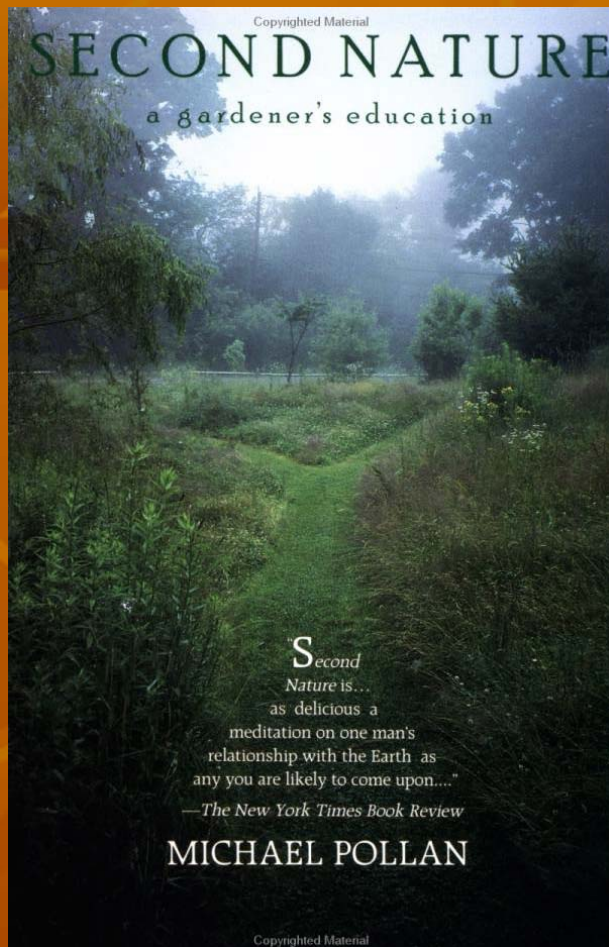
Tropical Sage



Blue Porterweed

Stachytarpheta jamaicensis
blue porterweed
photo taken by Amy Richard
copyright 2015, Inez Florida

Pathways



- Three pathways
- 1st connects the Ward House with the orange groves
- 2nd winds around the side of the Ward House merging with the backyard
- 3rd branches from the 2nd path skirting the orange grove and connecting with Genius Drive

Face of the Ward House

Horse Mint



Beauty
Berry

Silver
Palm



Border of the 2nd path

Camelia



Coontie



Verbanum

Border of the 3rd Path

Native Coffee



Nectarine Tree

Species List

Species:	Amount:
Milkweed	6
Plumbago	6
Spiderwort	8
Tropical Sage	21
Blue Porterweed	8
Native Mint	2
Beauty Berry	6
Silver Palmetto	8
Camelia	2
Coontie	9
Verbanum	4
Native Coffee	5
Nectarine Tree	2
	Total: 87

The Future

- With the gradual restoration of the Genius Reserve, it is our hope that the Ward House's paths and borders will eventually be extended to the rear of the building
- Our design would exist as a framework to be built upon as the Genius Reserve continues through its restorative transformation

